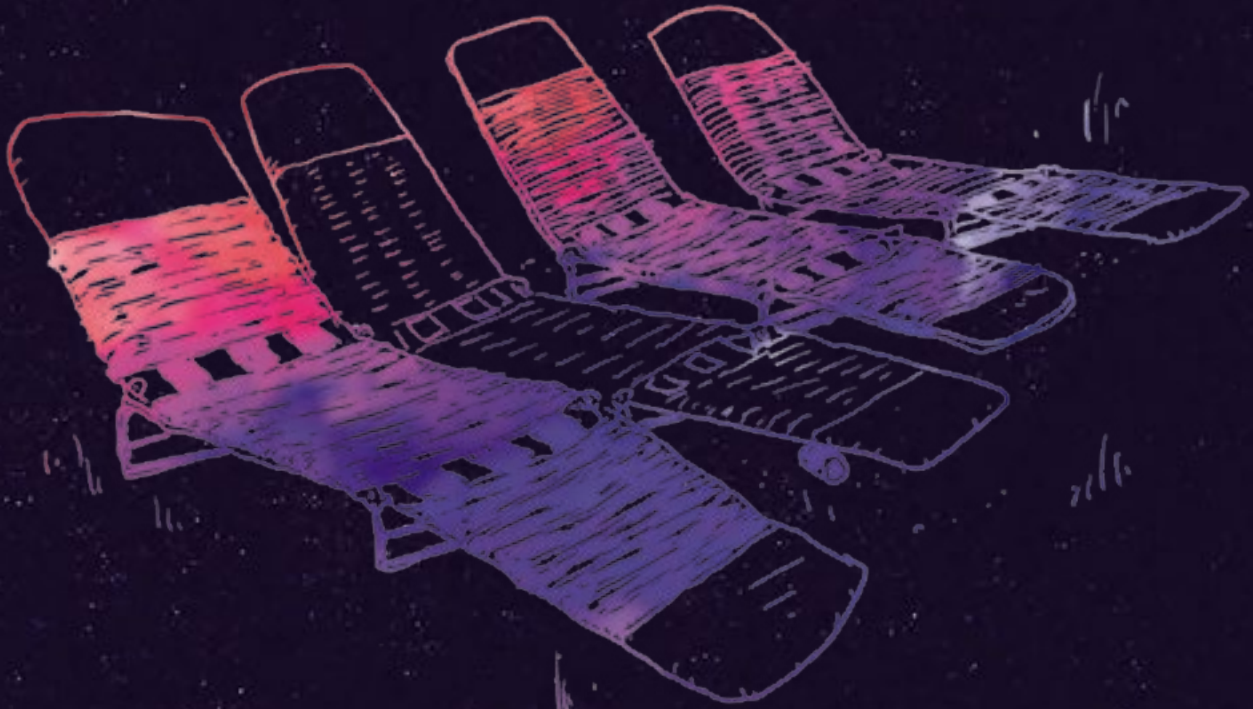


GOLDEN PLAINS



PLEASE
FORWARD THIS
ONTO YOUR
FRIENDS WHO
ARE COMING

GPX
MARCH 12-14 2016
MEREDITH SUPERNATURAL
AMPHITHEATRE

Little Golden Booklet

Thank you very much for Being Part of The Tenth Life of Golden Plains. The Little Golden Booklet is designed to help make your time here incredibly smooth and outrageously enjoyable. Please have a good read of it all, even if you have flown with us before. And: bring it with you.

Important things that we can't stress enough to veterans and newcomers alike include these: Bring lots of slip, slop, slap stuff, bring shoes and socks (not thongs!), **DON'T BRING ANY GLASS AT ALL**, do bring a bagful of warm and waterproof clothes and warm bedding as it will get cool at night, put your wristband on (not too tight) as you leave home and don't remove it till you're out the gate at the end of the festival, carry photo ID even if you are 73, get your tent/caravan/inflatable kingdom out now and make sure it's in good working order and arrive in convoy if you want to camp together. **NO FIRES** – it's a Total Fire Ban day and night.

Remember - although Golden Plains may feel like a sovereign dominion (her own country), the usual laws apply within the festival boundaries

as they do outside them. Likewise, the laws of the human body are no different there than anywhere else. So Please Look After Yourself And Others. The Gates open 8am Saturday and live music starts from 2pm that day. Plenty of time to get in and set up before It starts.

Golden Plains has a No Dickhead Policy; please don't do things like annoy your neighbours with loud music or block views in The Sup' with things on sticks. Thanks.

Read on carefully, go to goldenplains.com.au for further info on anything, and I very much look forward to The Pleasure of Your Company,

Aunty Meredith

GPX
MARCH 12-14
2016



MEREDITH
SUPERNATURAL
AMPHITHEATRE

SATURDAY

1:55 - 2:00PM	OPENING CEREMONY
2:00 - 2:40	GOLD CLASS
3:00 - 3:40	EMMA DONOVAN & THE PUTBACKS
4:00 - 4:40	U.S. GIRLS
4:45	HOUSEKEEPING
5:05 - 5:45	NATALIE PRASS
6:05 - 6:50	JOHN GRANT
7:10 - 7:55	BUZZCOCKS
8:00	HOUSEKEEPING
8:20 - 9:00	ROYAL HEADACHE
9:20 - 10:10	C.W. STONEKING
10:30 - 11:20	NO ZU
11:50 - 12:40AM	BLACK CAB
1:00 - 1:45	FRIENDSHIPS
2:00 - 2:50	DARCY BAYLIS
3:00 - 5:00	KENJI TAKIMI
5:00 - 10:00AM	SILENCE IS GOLDEN

INTERSTITIAL SOUNDTRACK:
MILLY DAVISON & NICK BROWN
SPECIAL GUEST MC: STEPH HUGHES

SUNDAY

10:00 - 10:40AM	HTRK
11:00 - 11:50	THE NECKS
12:10 - 12:50PM	SAMPA THE GREAT
1:10 - 1:50	SONGHOY BLUES
1:55	HOUSEKEEPING
2:10 - 2:50	TYRANNAMEN
3:10 - 3:50	FREDDIE GIBBS
4:10 - 4:50	KOI CHILD
5:15 - 6:15	SEUN KUTI & EGYPT 80
6:20	HOUSEKEEPING
6:40 - 7:35	BUILT TO SPILL
8:00 - 9:00	SLEATER-KINNEY
9:30 - 10:30	VIOLENT FEMMES
11:00 - 12:00AM	EDDY CURRENT SUPPRESSION RING
12:30 - 2:30	SADAR BAHAR
2:30 - 4:30	TOM OF ENGLAND
4:30 - 7:00	THE BLACK MADONNA
7:00AM	SILENCE IS GOLDEN
MONDAY 1PM	GATES CLOSE

INTERSTITIAL SOUNDTRACK:
CONRAD STANDISH, MILES CLERET
& DJ LACHLAN K
SPECIAL GUEST MC: STEW FARRELL

Please Look After Yourself & Others

Here at the Supernatural Amphitheatre, we want you to have the best possible time. The time of your life. We also want your friends and the people around you to have a great time. Please don't stuff that up by being irresponsible for your wellbeing.

- Bring NO GLASS bottles or jars of anything at all (drinks, food, lotions, etc). Use cans or decant into plastic bottles before you arrive. Bring what you need in (reusable) plastic containers.
- Dress sensibly for the conditions. Wear shoes.
- ☐ Bring plenty of warm, waterproof clothes and a good WATERPROOF coat.
- ☐ Bring plenty of warm bedding / doonas / sleepingbag / blankets – nights get COLD, even if days are hot.
- ☐ Bring a good tent, caravan, panelvan, luxury motorhome, etc – good shelter in good condition to sleep well in. Pack a spare tarp.
- ☐ PHOTO ID – carry it at all times, even if you are 73.
- Trees can, like us, break. Take care when camping under them and definitely don't climb 'em.
- Rest and rehydrate. Drink water regularly and eat well.
- Please wash your hands.
- Mixing alcohol and drugs greatly increases the possibility of overdose or accidents, as does mixing two or more drugs, even if taken hours apart.
- If you have a viral or bacterial illness please stay at home, to keep from infecting others.
- Do not use drugs. But especially do not use drugs on your own. If you are feeling unwell – tell someone. If you or a friend has taken drugs and is in need of medical attention the First Aid staff are not obliged to involve the Police and they won't judge you. They are here to help. So please go to First Aid and be honest with them.
- Be careful mixing alcohol and energy drinks. The caffeine and sugar wear off before the effects of alcohol.

Never drive under the influence. Designate a driver and ALWAYS get a breath test before getting behind the wheel. Never reverse. Always check under and around your vehicle before moving it. If you need to leave early, park in the public car park (near Reception). Avoid driving during the festival by taking the festival shuttle to town and back, or check out Heaven Eleven (next to the Info Centre) – they sell things you forgot.

- Keep your campsite secure from wind. Weight the interior corners of your tent.
- ☐ Use sunsmart items – hat, sunscreens, long-sleeved shirt, sunglasses, etc.
- ☐ Bring bulk (10ltr+) drinking water for your campsite and refillable plastic water bottles.
- ☐ Play safe, pack condoms.
- ☐ Mobile phone and spare charged battery if you have one.
- ☐ If you have a chronic condition, allergy or illness (ie. asthma, diabetes, epilepsy), please carry information regarding your condition and emergency contact number on you at all times. Bring any medication you need – there is no pharmacy on site. If you suffer from hayfever come prepared with your regular medication/pills.
- ☐ Insect repellent (eg. Rid, Bushman's Gel, Aerogard).
- ☐ Tent marker or flag for the car aerial, etc. Tents all look the same.
- ☐ Torch or battery-powered camplight. Spare batteries.
- Report DICKHEADS – that includes stage diving, crowd surfing, moshing, or aggressive behavior.
- ☐ Bring plenty of tie down ropes to take your couch home when you leave.
- For your safety please always stay within the festival boundaries and never trespass onto neighbouring property.
- Please understand and follow the Rules and the Terms and Conditions viewable at goldenplains.com.au

CAUTION FIRE WARNING Total Fire Ban Day and Night.

- NO FIRES, flares, firesticks, fireworks, candles, generators, BBQs or cooking of any kind, inside or out.
- No gas bottle fridges or kegs that require cylinders.
- Do not park ANY part of your vehicle on roads so emergency services have full access.
- Keep campsites clear from flammable material and rubbish.
- Free drinking water tanks in the food courts and campgrounds can be used for bulk water refills.
- Don't leave your vehicle running longer than necessary.
- Avoid setting up camp next to vehicle exhaust.
- Smokers and nonsmokers ensure butts are 100% extinguished every time. Drench them in the dregs of a can. Or grind them fully out and bin them.

Your safety is our priority. This season you and your guests can register your tickets and in-case-of emergency contact numbers with us – goldenplains.com.au/register

No Dickheads

That includes no stage diving, crowd surfing, moshing, aggressive behaviour, intoxicated drivers, blocking views in the Amphi or overly loud music in campgrounds.

Leave dickheads at home, thanks. Think you've spotted one of these rare, unwelcome creatures? Let the Info Centre or your local Helper Hut know.



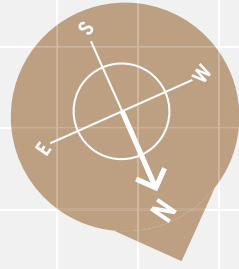
Take Your Furniture Home



Trespassers Beware

Any person who attempts to use an invalid or forged Festival Wristband to enter the Meredith Supernatural Amphitheatre will be handed over to Police. Anyone found wearing an invalid or forged Festival Wristband will be regarded as a trespasser and handed over to Police. The wearer will be taken to the Police Station and may be charged with Falsification of a Document, Obtaining Financial Advantage By Deception and Trespass. The maximum penalty for

these dishonesty crimes is 10 years imprisonment. Alternatively a criminal conviction and/or a substantial fine are almost certainties. It is your responsibility to ensure the validity of your Festival Wristband. It is not possible to purchase a forged Festival Wristband through the Subscriber Ballot, Selected Store Sales or Online Sales. The Trespasser Policy can be viewed at goldenplains.com.au



	INFO CENTRE K14		PINK FLAMINGO BAR M12		SHUTTLE BUS STOP I8		INCIDENT COORDINATION CENTRE K14
	FIRST AID K13		ICE SOLD HERE N12		ACCESSIBLE TOILET/SHOWER K12/K13		POLICE K13
	HELPER HUTS G8, G12, H14, M11, N8, N14, O10, O14, Q11, R12, S9, U11, U15		BEER SOLD HERE L12		SIGN IN K14		FESTIVAL BOUNDARY
	ERIC'S TERRACE O14		HEAVEN ELEVEN QUIKY MART L14		ARTIST MERCHANDISE L14		THE ROCHESTER O11, O12
	FREE BREXIT/TESTING BY VANESSA H7		FREE BREXIT/TESTING BY VANESSA H7		DRINKING WATER TANK D7, G8, G12, K13, N8, N15, O10, Q11, S9, S12, U11, U15		MASSAGE N15
	THE GIFT SHOPPE L14		THE GIFT SHOPPE L14		MEREDITH EYE N12		SECONDARY ASSEMBLY
	RUBBISH DROP OFF G12, H10, M8, Q11, S8, U11		RUBBISH DROP OFF G12, H10, M8, Q11, S8, U11		ECOPLEX CINEMA J15		RUBBISH WORLD K7
	PRIMARY EMERGENCY ASSEMBLY AREA M14		PRIMARY EMERGENCY ASSEMBLY AREA M14		FIRE RESPONSE I9		PRIMARY EMERGENCY ASSEMBLY AREA M14

QUICK GUIDE

- **In an emergency or time critical incident DIAL 000.** The address is Meredith Suprematural Amphitheatre, corner of Mount Mercer & Nolan roads, Meredith.
Melway's Map: 611 C4.
- **First Aid and Police are located at grid reference K13,** to the right of the stage near the International Food Court.
First Fire Response Team are located at grid reference J9.
- **If you need First Aid or Police to come to you,** text/call the Incident Coordination Centre on 0430 091 120 ask a staff member with a 2-way radio OR send a representative to grid reference K13 to direct them to your location. Use the festival grid reference when referring to your location. For 24 hour campground support, familiarise yourself with the location of the Helper Huts.
- **In the event that an area needs to be cleared** do not attempt to leave the site by foot or vehicle and remain in the nominated assembly area. Follow the directions of emergency management staff.

International Food Court

- Fish & Chips
- Burgers
- Coffee & Croissants
- Pierogi Pierogi
- Faus Coffee
- Gumbo Kitchen
- Beatbox Kitchen
- Hare Krishna
- Ghost Kitchen
- The Forge Pizzeria
- Clyde Park
- The Brûlée Cart
- Community Tucker Tent

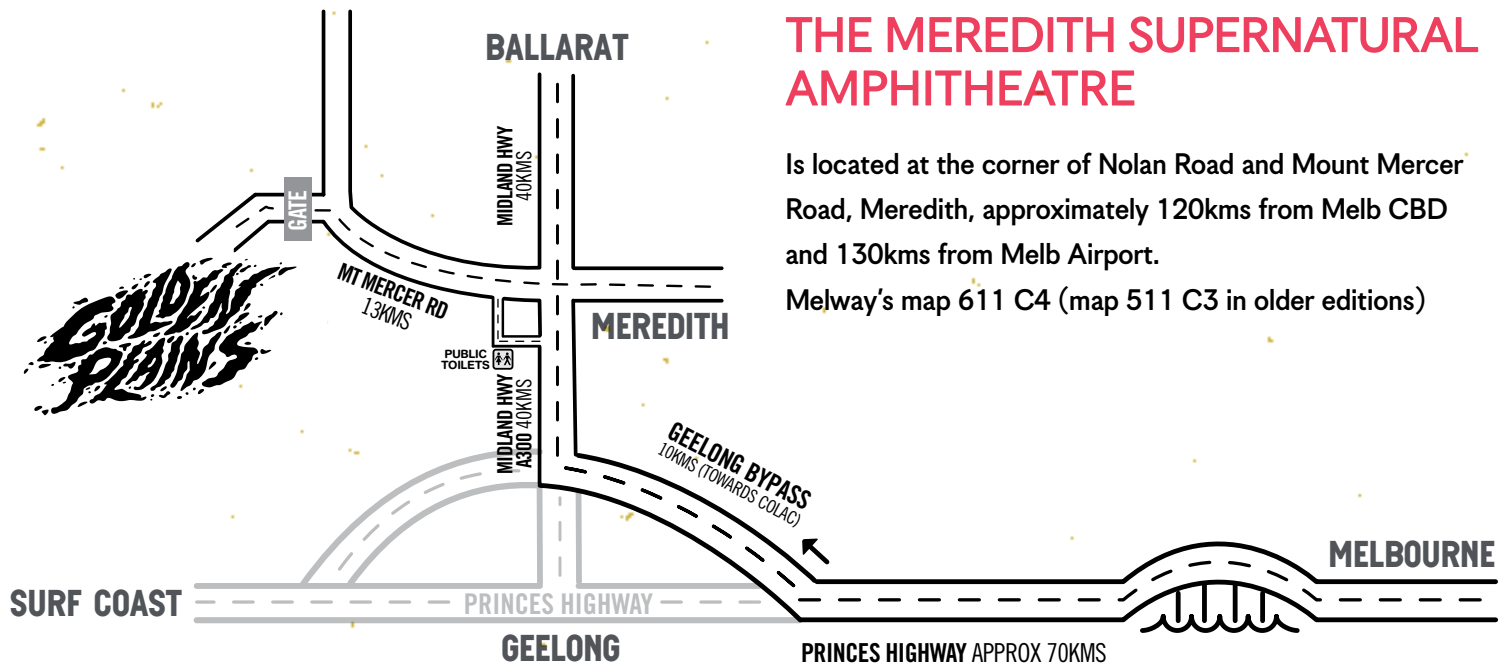
Southbank Food Court

- Cocohut
- Gourmet Gazelle
- Cooler Ice Coffees & Billy Van Creamy
- Jerry's Veggieburgers
- Minerva and the Bean
- The Orange Lady
- Hotties Eat Rois
- Souvlaki Bar
- Flying Calamari Brothers
- White Guys Cooks Thai
- Taco Truck
- Overdosa



HOW TO GET TO THE MEREDITH SUPERNATURAL AMPHITHEATRE

GATES OPEN AT 8AM ON SATURDAY. PLEASE DON'T COME EARLIER, ROADBLOCKS ARE IN PLACE



THE MEREDITH SUPERNATURAL AMPHITHEATRE

Is located at the corner of Nolan Road and Mount Mercer Road, Meredith, approximately 120kms from Melb CBD and 130kms from Melb Airport.

Melway's map 611 C4 (map 511 C3 in older editions)

DRIVING DIRECTIONS FROM MELBOURNE

From Melbourne, take the Princes Hwy to Geelong.

As you approach Geelong veer right onto the Geelong Bypass following the signs to Colac.

Travel on the Geelong Bypass for about 10kms and then take the Ballarat Exit A300.

Turn right onto the A300 and head towards Ballarat for about 40kms until you get to Meredith.

At Meredith, turn left after the service station. This is Mount Mercer Road.

The Festival is approximately 13kms along this road.

On the Saturday of the festival this might take up to 40 minutes as there are holding bays to ensure safe and steady traffic flow.

DRIVING DIRECTIONS FROM GEELONG AND SURF COAST

From Geelong take the Midland Hwy (A300) and head towards Ballarat for about 40kms until you get to Meredith.

At Meredith, turn left after the service station. This is Mount Mercer Road.

The Festival is approximately 13kms along this road.

DRIVING DIRECTIONS FROM BALLARAT

From Ballarat take the Midland Hwy (A300) and head towards Geelong for about 40 kms until you get to Meredith.

Turn right after the corner pub in Meredith. This is Mount Mercer Road.

The festival is approximately 13kms along this road.

PLEASE DON'T WEE ON OUR NEIGHBOURS' FENCES ANYTIME ANYWHERE EVER.
PLEASE USE THE PUBLIC TOILETS IN TOWN.

KEEP ALL INTERNAL ROADS CLEAR FOR EMERGENCY VEHICLES.

ANYONE TRESPASSING OR ASSISTING ANYONE TO TRESPASS WILL BE EJECTED.
ONLY ACCESS VIA THE CORNER OF MOUNT MERCER AND NOLAN ROADS. STAY WITHIN FESTIVAL BOUNDARIES.